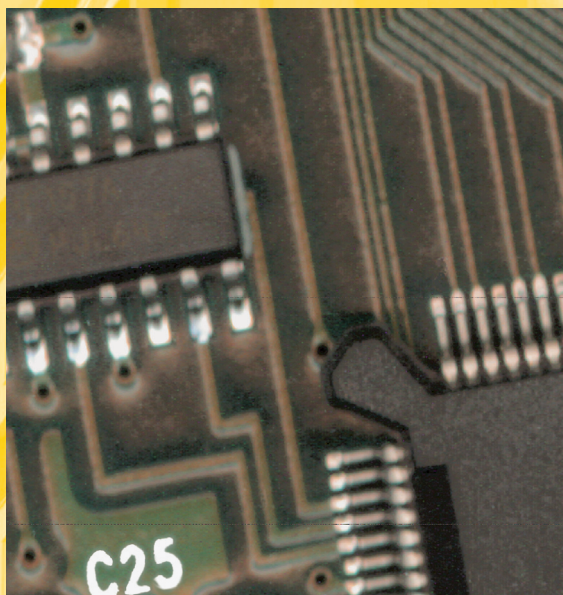


FINAL PROGRAMME

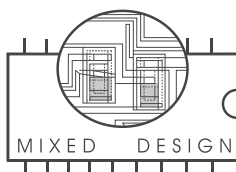
29th International Conference



MIXDES 2022

**MIXED DESIGN OF INTEGRATED
CIRCUITS AND SYSTEMS**

**Wrocław, Poland
23 - 24 June, 2022**



29th International Conference **MIXED DESIGN OF INTEGRATED** **CIRCUITS AND SYSTEMS** **Wrocław, Poland, 23-24 June 2022**

MIXDES 2022 Timetable

Day 1	Thursday, June 23 rd , 2022		
	Room A	Room B	Room C
8:45	Conference Opening		
9:00	Plenary Session I		
10:30	Coffee Break		
11:00	Session 1 (Part 1)	Session 4 (Part 1)	IEEE DL Session
13:00	Lunch		
14:00	Session 1 (Part 2)	Session 4 (Part 2)	IEEE ED Poland Meeting
15:20	Coffee Break		
15:40	Session 1 (Part 3)	Session 5	
19:00	Welcome Party		

Day 2	Friday, June 24 th , 2022		
	Room A	Room B	Room C
8:30	Plenary Session II		
9:30	Session 2	SPARTAN Project (Part 1)	Special Session (Part 1)
10:50	Coffee Break		
11:10	Session 3	SPARTAN Project (Part 2)	Special Session (Part 2)
13:00	Lunch		
14:00	Tourist Activities		
19:00	Closing Ceremony		

WELCOME TO MIXDES 2022

This year the International Conference "Mixed Design of Integrated Circuits and Systems" celebrates its 29th edition. For the past twenty eight years the conference has been a unique forum for promoting different approaches to mixed VLSI design and an esteemed venue for presenting multidisciplinary research. This year we meet together in Wrocław, the capital of Lower Silesia region.

MIXDES 2022 consists of plenary lectures, regular, special and poster sessions focusing on recent trends and advances on all aspects of main conference topics, reviewed and selected from all submissions from 19 countries. During the plenary lectures, the following 3 invited papers will be presented:

- *IC Masks - The Challenges of the Newest Technologies*
Mariusz Niewczas (Design2Silicon Inc., USA)
- *Nanoelectronic Challenges and Opportunities for Cyberphysical Systems*
Maria Helena Fino (Nova School of Science & Technology, Portugal)
- *Ultralow Power Stretchable TFT Electronics*
Arokia Nathan (University of Cambridge, UK)

The program includes 2 special sessions, aiming at complementing the regular program with emerging topics of interest to the circuit design community:

- *Compact Modeling of Heterogeneous Devices and Systems*
organised by Dr. D. Tomaszewski (Łukasiewicz - Institute of Microelectronics and Photonics, Poland) and Dr. W. Grabiński (GMC, Switzerland)
- *Special Session in Memory of Professor Wojciech P. Maly*
organised by Prof. W. Kuźmich and Prof. A. Pfitzner (Warsaw University of Technology, Poland)

In addition to the technical sessions, the conference attendees will have an opportunity to participate in an IEEE Distinguished Lecturers' session organized by Łukasiewicz - Institute of Microelectronics and Photonics, Poland in collaboration with IEEE ED Poland Chapter.

The organisers would like to thank all the distinguished scientists who have supported the conference by taking part in the International Programme Committee and reviewing the contributed papers.

We hope that you will enjoy your visit to Wrocław and for the next year we invite you to Kraków the most beautiful city in Poland to celebrate the 30th edition of the conference.

Yours Sincerely,
MIXDES 2022 Organising Committee

ORGANIZED BY

Department of Microelectronics and Computer Science,
Lodz University of Technology, Poland

Institute of Microelectronics and Optoelectronics,
Warsaw University of Technology, Poland

IN COOPERATION WITH

Poland Section IEEE - ED & CAS Chapter

Section of Microelectronics and Electron Technology
of the Committee of Electronics and Telecommunication
of the Polish Academy of Sciences

Commission of Electronics and Photonics
of Polish National Committee of International Union of Radio Science - URSI

ORGANISING COMMITTEE

- | | | |
|-------|----------------|---|
| Prof. | A. Napieralski | (Chairman) |
| Dr. | M. Orlikowski | (Secretary) |
| Dr. | M. Napieralska | (Vice-Chairman) |
| Dr. | G. Jabłoński | Department of Microelectronics and Computer Science,
Lodz University of Technology, Poland |
| Prof. | W. Kuźmicz | Institute of Micro- and Optoelectronics,
Warsaw University of Technology, Poland |



IEEE



PAN

PROGRAMME COMMITTEE

Prof. M. Bucher	Technical University of Crete, Greece
Prof. J. Cabestany	Universitat Politècnica de Catalunya, Spain
Prof. J. Collet	LAAS - CNRS, Toulouse, France
Prof. A. Dąbrowski	Poznan University of Technology, Poland
Prof. G. De Mey	University of Ghent, Belgium
	(Vice-Chairman)
Prof. J. Deen	McMaster University, Canada
Prof. M.H. Fino	Universidade Nova de Lisboa, Portugal
Dr. D. Foty	Gilgamesh Associates, USA
Prof. L. Golonka	Wrocław University of Science and Technology, Poland
Prof. K. Górecki	Gdynia Maritime University, Poland
Dr. W. Grabiński	GMC, Switzerland
Prof. P. Gryboś	AGH University of Science and Technology, Poland
Prof. V. Hahanov	Kharkiv National University of Radioelectronics, Ukraine
Prof. A. Handkiewicz	Poznan University of Technology, Poland
Prof. A. Hatzopoulos	Aristotle University of Thessaloniki, Greece
Dr. S. Hausman	Lodz University of Technology, Poland
Dr. G. Jabłoński	Lodz University of Technology, Poland
Prof. A. Kos	AGH University of Science and Technology, Poland
Prof. W. Kuźmicz	Warsaw University of Technology, Poland
Prof. C. Lallement	Strasbourg University, France
Prof. M. Lobur	Lviv Polytechnical National University Ukraine
Dr. M.M. Louerat	Université Pierre et Marie Curie, Paris, France
Prof. T. Łuba	Warsaw University of Technology, Poland
Prof. B. Macukow	Warsaw University of Technology, Poland
Prof. J. Madrenas	Universitat Politècnica de Catalunya, Spain
Dr. D. Makowski	Lodz University of Technology, Poland
Prof. A. Martinez	LAAS - CNRS, Toulouse, France
	(Honorary Chairman)
Prof. A. Materka	Lodz University of Technology, Poland
Prof. W. Mathis	Leibniz University of Hannover, Germany
Prof. J.M. Moreno	Universitat Politècnica de Catalunya, Spain
Dr. M. Napieralska	Lodz University of Technology, Poland
Prof. A. Napieralski	Lodz University of Technology, Poland
	(General Chairman)
Prof. J. Nishizawa	Semiconductor Research Institute, Japan
Prof. L. Opalski	Warsaw University of Technology, Poland
Prof. A. Pfitzner	Warsaw University of Technology, Poland
	(Programme Chairman)

Prof. E. Piętka	Silesian University of Technology, Poland
Prof. W. Pleskacz	Warsaw University of Technology, Poland
Dr. B.F. Romanowicz	Nano Science and Technology Institute, USA
Prof. J.A. Rubio	Universitat Politècnica de Catalunya, Spain
Prof. A. Rybarczyk	Poznan University of Technology, Poland
Dr. J.-M. Sallese	Swiss Federal Institute of Technology, Switzerland
Prof. D. Sankowski	Lodz University of Technology, Poland
Dr. M. Schwarz	Robert Bosch GmbH, Germany
Prof. T. Szmuc	AGH University of Science and Technology, Poland
Dr. P. Śniatała	Poznań University of Technology, Poland
Prof. M. Tadeusiewicz	Lodz University of Technology, Poland
Dr. D. Tomaszewski	Institute of Electron Technology, Warsaw, Poland
Dr. P. Tounsi	INSA de Toulouse, France
Dr. M. Turowski	Alphacore, Inc., USA
Prof. R. Ubar	Tallinn Technical University, Estonia
Prof. G. Wachutka	Technische Universität München, Germany
Prof. K. Wawryn	Technical University of Koszalin, Poland
Prof. B. Więcek	Lodz University of Technology, Poland
Prof. S. Yoshitomi	Toshiba Corporation, Japan
Prof. J. Zarębski	Gdynia Maritime Academy, Poland
Prof. M. Zubert	Lodz University of Technology, Poland

MAIN TOPICS

- 1. Design of Integrated Circuits and Microsystems**
Design methodologies. Digital and analog synthesis. Hardware-software co-design. Reconfigurable hardware. Hardware description languages. Intellectual property-based design. Design reuse.
- 2. Power Electronics**
Design, manufacturing, and simulation of power semiconductor devices. Hybrid and monolithic Smart Power circuits. Power integration.
- 3. Signal Processing**
Digital and analog filters, telecommunication circuits. Neural networks. Artificial intelligence. Fuzzy logic. Low voltage and low power solutions.
- 4. Embedded Systems**
Design, verification and applications.
- 5. Medical Applications**
Medical and biotechnology applications. Thermography in medicine.

CONFERENCE CENTER

The conference will take place in:

Q Hotel Plus Wrocław
Zaolziańska 2
53-334 Wrocław
Tel. +48 717491700
e-mail: wroclawplus@qhotels.pl

ACCOMMODATION

The accommodation will be offered for the Conference participants at conference site in Q Hotel Plus Wrocław located in the Wrocław city centre. Please note that the MIXDES 2022 Conference participants reserve the hotel rooms on their own.



REGISTRATION

The standard conference registration fee includes the admission to the conference, a copy of the Book of Abstracts, Conference Proceedings CD-ROM and other conference materials, tourist activities, all lunches, the welcome party, the banquet, coffee and tea during the breaks. To encourage students to participate in the Conference, the student registration fee is available.

The Book of Abstract and other conference materials will be distributed to participants at the registration desk. The Conference Proceedings CD-ROM will be distributed to the participants after the conference.

The registration desk will be located in the conference center. It will be working during the following hours:

23 June (Thursday)	07:30 – 13:00 h, 14:00 – 17:00 h
24 June (Friday)	08:00 – 13:00 h

GENERAL INFORMATION AND INQUIRIES

Dr. Mariusz Orlikowski

Lodz University of Technology
Department of Microelectronics and Computer Science
ul. Wólczańska 221 (building B18), 93-005 Łódź, Poland

e-mail: mixdes2022@dmcs.p.lodz.pl
www: <http://www.mixdes.org>

tel.: +48 604397239
fax: +48 426360327

THE CITY OF WROCLAW

Wrocław originates from the Xth century and was probably named after Czech Duke called Vratislav. The city was mentioned in the year 1000 in the chronicle by Merseburg Bishop Thietmar as Wrotizlawa. The shorter name Wrezlaw appeared by the end of the XIIth century. Over the centuries the city has been a part of Czech Kingdom, Poland, Austria, Prussia and Germany. The Polish Duke Boleslaw the Brave seized the city in 992 and it remained, with a short break in the years 1038-1054, under the rule of Polish Piast dynasty until 1335. One of the first important events in the history of the city was the foundation of the Wrocław Diocese by Boleslaw the Brave in 1000. Originally the city was located on the Cathedral Island and then it expanded to the neighbouring Sand Island. The city was devastated in 1241 during the Mongol invasion of Europe when the inhabitants burned the city to force the invaders to a withdrawal. Afterwards the town was relocated to the left bank of the river and repopulated by Germans, who became the dominant ethnic group. In 1262 Wrocław adopted Magdeburg rights and at the end of the XIIIth century joined the Hanseatic League. From that time originates also the German name of the city, Breslau. In 1335 Wrocław was incorporated into the Czech Kingdom becoming in this way a part of the Holy Roman Empire. Already in 1518 the city became protestant, however from 1526 it was ruled by the catholic Habsburgs. During the Thirty Years' War Wrocław was occupied by Saxon and Swedish troops and lost almost half of its inhabitants due to the plague. In 1702 the Austrian emperor Leopold founded the school, known as Leopoldina, which evolved later to become finally the University of Wrocław. Frederick the Great annexed Breslau during the War of the Austrian Succession in the 1740s. Finally the Austrian empress Maria Theresa ceded officially the city to Prussia in 1763. In 1813 the city became the centre of the German liberation movement against Napoleon and the centre of Prussian mobilization for the campaign which ended with the famous Battle of the Nations by Leipzig. After the unification in 1871 Breslau was the 6th largest city in Germany and its population grew rapidly to over half a million in 1910. In the same year the Technische Hochschule was founded, now known as the Wrocław University of Technology. In 1930s Breslau became one of the major support bases for the Nazis, who in the 1932 elections received 43.5% of votes, their third best result in entire Germany. During the World War II, for most of the time the city was not affected. However, in February 1945, when the Soviet Army approached Breslau, the fanatic Gauleiter Karl Hanke declared the city a Festung (fortress) to be held at all costs. This decision brought death to 18,000 civilians who froze to death during the late evacuation and further 40,000 who were killed in the fighting. By the end of the siege, which ended only on 7 May 1945, half the city was completely destroyed.

Wrocław returned to Poland in 1945 under the terms of the Potsdam Conference. Between 1945 and 1949 most remaining native German inhabitants fled or were forcibly expelled. The city was successively repopulated by the Polish citizens coming mainly from former eastern Polish territories annexed by the Soviet Union in 1939.

TOURIST ACTIVITIES

During our tourist activities you will have the possibility to visit all the most important places and monuments from the history of Wrocław, including:

- breathtakingly beautiful old Wrocław Opera house
- Wolności Square (former Zamkowy Square) situated above the moat with the oldest Baroque part which remained from a royal castle
- Four Denominations District
- Market Square, Town Hall and famous Wrocław facades of old historic buildings
- St. Elisabeth's gothic church with organs of Michael Engler
- the main baroque building of the Wrocław University
- Ostrów Tumski - the oldest part of the city of Wrocław

The Ostrów Tumski will be reached by cruise with Bratislavia ship and it is the last place to visit. When the trip is finished you may return to conference site for the conference closing ceremony and the conference banquet.

TRANSPORT

Wrocław can be reached by train or road, you can also use Copernicus Airport Wrocław. Planes from a number of European cities to Wrocław Airport (see <https://airport.wroclaw.pl/en/>).

There are direct trains from Warszawa Centralna Station to Wrocław Główny Station:

Train type	IC	EIP	IC	EIP	IC	IC	IC	IC	TLK
Warszawa Centralna	05:38	05:50	07:32	09:30	10:20	12:40	14:31	19:06	21:21
Warszawa Zachodnia	05:49	05:55	07:39	09:39	10:30	12:47	14:39	19:12	21:30
Wrocław	10:38	09:55	12:11	13:34	15:11	17:20	19:25	00:30	04:11

Please note that the IC trains have seat booking (you can travel without booking only if there are free seats). For most up-to-date train availability and purchasing the tickets go to <https://rozklad-pkp.pl/en>

The Centre of Wrocław (Wrocław Główny Railway Station) can be reached from Wrocław Airport by MPK bus nr 106 (4.00 PLN, runs about 30 minutes) or by TAXI (~50 PLN).

MIXDES 2022

To move around Wrocław you can use the city public transport. Tickets are valid for the specific period of time - in case of change one does not have to use second ticket, except for the single fare tickets (for additional information about public transport see <http://wroclaw.jakdojade.pl/?lang=en>).

Validity period	Price of ticket
Single fare	4.60 PLN
15 minutes	3.20 PLN
30 minutes	4.00 PLN
60 minutes	5.20 PLN

Validity period	Price of ticket
90 minutes	7.00 PLN
24 h	15.00 PLN
48 h	26.00 PLN
72 h	32.00 PLN

The main conference building (Q Hotel Plus Wrocław) is about 10-15 minutes on foot from the Wrocław Główny Railway Station. You can also take a tram number 70 (direction "FAT", 2 stops) TAXIs from the station are also available (~14 PLN). We recommend using corporate taxis, which may be requested by phone call:

- Domini Taxi, +48 601 999 625
- Radio Taxi Express, +48 71 373 40 30
- Radio Taxi Serc, +48 71 19 629
- Royal Taxi, +48 530 303 020

PROGRAMME OF THE CONFERENCE

The programme of the MIXDES 2022 Conference will include oral presentations of contributed and invited papers and special sessions.

Except for the plenary sessions, the programme of the conference will be divided into three parallel sessions, in accordance with discussed topics. The language of the Conference is English, neither translation nor interpretation will be provided.

The time of oral presentations:

- for invited papers: 20-25 min. for presentation and 5-10 min. for questions,
- for regular papers: 15 min. for presentation and 5 min. for questions.

Lunches:

Lunches will be served each day at the conference center at the times indicated in the programme.

Welcome Party and Conference Banquet:

The Welcome Party will be organised on Thursday (the first conference day) at 19:00. The Conference Banquet and the Closing Ceremony will take place on Friday at 19:00. Both events will take place at the conference center.

IMPORTANT PHONE NUMBERS

Ambulance	999	Fire Brigade	998
Police	997	Emergency phone	112

BANKING

Foreign exchange facilities are available at major airports and at larger hotels, as well as in many private offices, called “Kantor”. Credit cards can be used in most of the places such as banks, hotels, car-rental offices, restaurants, and shops. Approximate currency exchange rate: 1 € = 4.60 PLN, 1 \$ = 4.26 PLN (for the up-to-date information refer to <http://www.nbp.pl>).

Credit cards:

Visa and MasterCard are the most common cards. However, other cards might be accepted.

Currency:

Generally, everywhere in Poland you pay in Polish zlotys. The currency units are złoty (zł, PLN) and grosz (gr), 1 zł = 100 gr. The Polish zloty is a fully convertible currency internally in Poland.

WEATHER

June in Poland is generally sunny, with some showers, the temperatures can be typically 15 to 28 °C during days. During nights, the temperature can go down to 8-10 °C. So, we can suggest you to bring summer clothes, with a quite warm jacket or pullover, and an umbrella.

Time**Room A****08:45 Conference Opening**

Chairmen: Prof. Andrzej Pfitzner, Prof. Wiesław Kuźmicz and Prof. Gilbert De Mey

09:00 Plenary Session I

Chairman: Prof. Witold Pleskacz

IC Masks - The Challenges of the Newest Technologies

M. Niewczas (D2S Inc., USA)

Estimating and Improving IC Manufacturing Yield: Past, Present and Future

W. Kuźmicz (Warsaw Univ. of Techn., Poland)

VESTIC: A New IC Manufacturing Paradigm, Present Status and Future Plans

A. Pfitzner (Warsaw Univ. of Techn., Poland)

10:30 Coffee Break**11:00 Session 1 (Part 1): Design of Integrated Circuits and Microsystems**

Chairman: Prof. Andrzej Pritzner

8-bit Low-Power, Low-Area SAR ADC for Biomedical Multichannel Integrated Recording System in CMOS 40nm

M. Rosół, P. Kmon (AGH Univ. of Science and Techn., Poland)

A 50 MHz, 46 μ W, 0.28% Accuracy, 67 ppm/ $^{\circ}$ C Relaxation Oscillator in 40nm

CMOS Process for Multichannel Integrated Biomedical Recording System

W. Mrzygłód, P. Kmon (AGH Univ. of Science and Techn., Poland)

A Flexible CMOS Test-Pixel Readout System

D. Sami (Photolithics OOD and Univ. of Ruse, Bulgaria), D. Levski (Photolithics

OOD, Bulgaria), G. Meynants (Photolithics OOD, Bulgaria and KU Leuven,

Belgium), M. Waeny, N. Dimitrov, G. Bochev (Photolithics OOD, Bulgaria),

R. Kandilarov (Photolithics OOD and Univ. of Ruse, Bulgaria)

A New FPGA-based Architecture of Task Scheduler with Support of Periodic Real-Time Tasks

L. Kohutka (Slovak Univ. of Techn. in Bratislava, Slovakia)

13:00 Lunch

14:00 Session 1 (Part 2): Design of Integrated Circuits and Microsystems

Chairman: Prof. Wiesław Kuźmicz

Analytical Calculation of Inference in Memristor-based Stochastic Artificial Neural Networks

N. Bogun (THM Univ. of Applied Sciences and Justus-Liebig Univ., Germany), E. Perez-Bosch Quesada, E. Perez (IHP-Leibniz-Inst. für Innovative Mikroelektronik, Germany), C. Wenger (IHP-Leibniz-Inst. für Innovative Mikroelektronik and BTU Cottbus-Senftenberg, Germany), A. Kloes, M. Schwarz (THM Univ. of Applied Sciences, Germany)

Clock Signal Phase Alignment System for Daisy Chained Integrated Circuits

A. Wojciechowski (Warsaw Univ. of Techn., Poland), K. Marcinek (Warsaw Univ. of Techn. and ChipCraft Sp. z o.o., Poland), W. Pleskacz (Warsaw Univ. of Techn., Poland)

Comparative Analysis of CMOS Latch-Driver Circuits for Current-Steering Digital-to-Analog Converters

O. Morales Chacon, J. Wikner, A. Alvandpour (Linköping Univ., Sweden), L. Siek (Nanyang Technological Univ., Singapore)

Design of 1.55 NEF, 2 μ A, Chopper Based Amplifier in 40nm CMOS for Biomedical Multichannel Integrated System

P. Wargacki, P. Kmon (AGH Univ. of Science and Techn., Poland)

15:20 Coffee Break**15:40 Session 1 (Part 3): Design of Integrated Circuits and Microsystems**

Chairman: Prof. Krzysztof Górecki

Design Optimization of a New Nanostructured P-GaN Gate for Normally-off GaN HEMTs

D. Rouly, J. Tasselli, P. Austin, C. Haloui, K. Isoird, F. Morancho (LAAS-CNRS, Toulouse Univ., CNRS, UPS, France)

SPAD Mixed-Quenching Circuit in 0.35- μ m CMOS for Achieving a PDP of 39.2% at 854 nm

A. Dervic, H. Zimmermann (TU Wien, Austria)

Ultra Low-Power, Area-Efficient Multiplier Based on Shift-and-Add Architecture

K. Javanmardi (Roj Diyar Nano Electro System Technical and Engineering Company, Iran), A. Amini, A. Cabrini (Univ. of Pavia, Italy)

Observation of Readout Temperature Dependence and Its Variability for the MEMS and ASIC System Specimens and Their PCB Testbenches

M. Jankowski, J. Nazdrowicz, P. Zając, P. Amrozik, M. Szermer, C. Maj, G. Jabłoński (Lodz Univ. of Techn., Poland)

19:00 Welcome Party

Time**Room B****11:00 Session 4 (Part 1): Embedded System**

Chairman: Prof. Witold Pleskacz

Adaptive Resonance Control Based on the ANC-VSS-LMS Algorithm for Microphonics Compensation

F. Abdi, W. Cichalewski, W. Jałmużna, A. Napieralski (Lodz Univ. of Techn., Poland)

Analysis of Photovoltaics Performance Under Variable Conditions

J. Nazdrowicz, M. Jankowski, P. Błaszczyk (Lodz Univ. of Techn., Poland)

Evaluation of Embedded Devices for Real-Time Video Lane Detection

K. Podbucki, J. Suder, T. Marciniak, A. Dąbrowski (Poznan Univ. of Techn., Poland)

Memory Protection with Dynamic Authentication Trees

M. Millar, M. Łukowiak, S. Radziszowski (Rochester Inst. of Techn., USA)

Software Solutions for Dynamic Configuration and Deployment of EPICS Application for MTCA.4 Chassis Management

K. Kłys, W. Cichalewski, W. Jałmużna, A. Napieralski, P. Perek (Lodz. Univ. of Techn., Poland), A. Persson, A. Lindh Olsson (ESS, Sweden)

13:00 Lunch**14:00 Session 4 (Part 2): Embedded System**

Chairman: Prof. Andrzej Pfitzner

Firmware Update for Improved Reliability Embedded Systems

A. Krupiński, G. Świstak, P. Nowak vel Nowakowski, D. Makowski (Lodz Univ. of Techn., Poland)

Parameter Efficiency Testing for an Intrusion Detection System Inspired by the Human Immune System

P. Widulinski, K. Wawryn (Koszalin Univ. of Techn., Poland)

Road Line Detection by Reflected Heat

P. Marzec, A. Kos (AGH Univ. of Science and Techn., Poland)

Study About Navigation Systems for Autonomous Robots

A. Baratella Lugli, E. Raimundo Neto, N. Escobar Alves, R. Paranaíba Mesquita, T. Escobar Alves, W. Eleutério Saldanha (National Inst. of Telecommunications, Brazil)

15:20 Coffee Break**15:40 Session 4 (Part 3) & Session 5: Embedded Systems & Medical Applications**

Chairman: Prof. Marcin Janicki

Experimental Verification of the Required Power for Electrically Heated Clothing

W. Tylman, R. Kotas, M. Kamiński (Lodz Univ. of Techn., Poland),
A. Dąbrowska, M. Młynarczyk (Central Inst. for Labour Protection - National
Research Inst., Poland)

*An Application of Dual-Q Tunable Q-factor Wavelet Transform for QRS
Detection in ECG Signal*

T. Pander, T. Przybyła (Silesian Univ. of Techn., Poland)

*Enviropulmoguard ICT System for Interactive Health Monitoring - Preliminary
Study*

I. Karpiel, J. Wołoszyn, K. Olesz, M. Mysiński, M. Urzeniczok (Łukasiewicz
Research Network – Institute of Medical Technology and Equipment,
Poland), M. Zieliński (Medical Univ. of Silesia, Poland), S. Głowacki (Emag-Serwis
Sp. z o.o., Katowice, Poland, Poland), D. Feige, A. Sobotnicki, M. Czerw
(Łukasiewicz Research Network – Institute of Medical Technology and
Equipment, Poland)

Fluid Therapy Completion Time Assessment

T. Przybyła, T. Pander (Silesian Univ. of Techn., Poland)

19:00 Welcome Party

Time**Room C****11:00 IEEE Distinguished Lecturer Session**

Chairman: Dr. Daniel Tomaszewski

Ultralow Power Stretchable Devices and Circuits

A. Nathan (Univ. of Cambridge, UK)

On the Need for Non-conventional Nanoelectronics Devices Characterization in Engineering Graduate Courses: Modelling Needs and Design Challenges

M.-H. Fino (Nova School of Science & Techn., Portugal)

Compact Modeling and Free Open Source PDKs in FOSS TCAD/EDA Perspectiv

W. Grabiński (GMC, Switzerland)

FETs as Detectors of THz Radiation

D. Tomaszewski (Inst. of Microelectronics and Photonics, Poland)

13:00 Lunch**14:00 IEEE ED Poland Meeting****15:20 Coffee Break****19:00 Welcome Party**

Time**Room A****08:30 Plenary Session II: General Invited Papers**

Chairman: Dr. Daniel Tomaszewski

Nanoelectronic Challenges and Opportunities for Cyber-Physical Systems

M.-H. Fino (Nova School of Science & Techn., Portugal)

Ultralow Power Stretchable TFT Electronics

A. Nathan (Univ. of Cambridge, UK), C. Jiang (Tsinghua Univ., China),
J. Yu (Shandong Univ., China), H. Ma (Chinese Academy of Sciences, China)

09:30 Session 2: Power Electronics

Chairman: Prof. Marcin Janicki

Comparison of Photovoltaics System Response with Constant and Variable Step MPPT Algorithm

J. Nazdrowicz, W. Tylman, W. Marańda (Lodz Univ. of Techn., Poland)

DC/DC Buck Converter Soft-Start Methods

A. Borkowski (Warsaw Univ. of Techn., Poland), K. Siwiec (Warsaw Univ. of Techn. and ChipCraft Sp. z o.o., Poland), W. Pleskacz (Warsaw Univ. of Techn., Poland)

Influence of the IGBT Module Thermal Model Form on the Accuracy of Electrothermal Computations

K. Górecki, P. Górecki (Gdynia Maritime Univ., Poland)

Influence of the Measurement Method and the Cooling System on the Obtained Values of the Junction Temperature of Power MOSFETs

K. Górecki, K. Posobkiewicz (Gdynia Maritime Univ., Poland)

10:50 Coffee Break**11:10 Session 3: Signal Processing**

Chairman: Prof. Marcin Janicki

A Comprehensive Study of Optical Character Recognition

R. Raj, A. Kos (AGH Univ. of Science and Techn., Poland)

Analog Quadrature Modulator and Coupling Circuit for Narrowband Power Line Communication

J. Topiłko, K. Kucharski, K. Grabowski (FastLogic sp. z o.o., Poland),
Ł. Starzak, Z. Mudza (Lodz Univ. of Techn., Poland)

Data Analysis and Mining Using Logical Synthesis Methods

D. Wąsicki (Military Univ. of Techn., Poland), T. Łuba (Univ. of Social Sciences and Humanities, Poland)

Different Techniques for Human Activity Recognition

R. Raj, A. Kos (AGH Univ. of Science and Techn., Poland)

Model of Two Current-Source-Coupled Resonant Circuits with Chaotic Behavior

M. Rujzl, J. Petrzela (Brno Univ. of Techn., Czech Republic)

13:00 Lunch

14:00 Tourist Activities

19:00 Closing Ceremony

Time	Room B
09:30	SPPARTAN Project (Part 1): SPPARTAN Project internal meeting
10:50	Coffee Break
11:10	SPPARTAN Project (Part 2): SPPARTAN Project internal meeting
13:00	Lunch
14:00	Tourist Activities
19:00	Closing Ceremony

Time**Room C****09:30 Special Session (Part 1): Compact Modeling of Heterogeneous Devices and System**

Chairman: Dr. Daniel Tomaszewski

Compact Modeling of Channel-Resistance Effects in Reconfigurable Field-Effect Transistors

C. Römer (TH Mittelhessen - Univ. of Applied Sciences, Germany and Universitat Rovira i Virgili, Spain), G. Darbandy, M. Schwarz (TH Mittelhessen - Univ. of Applied Sciences, Germany), J. Trommer (NaMLab gGmbH, Germany), M. Simon (NaMLab gGmbH and TU Dresden, Germany), A. Heinzig (TU Dresden, Germany), T. Mikolajick (NaMLab gGmbH and TU Dresden, Germany), W. Weber (TU Wien, Austria), B. Iñíguez (Univ. Rovira i Virgili, Spain), A. Kloes (TH Mittelhessen - Univ. of Applied Sciences, Germany)

Optimization-based Determination of TFT contact Resistances in Python

M.H. Fino (Univ. Nova de Lisboa, Portugal)

Impact of Mechanical Bending on the Performance of Organic Thin-Film Transistors and the Characteristic Temperature of the Density of States

A. Nikolaou, J. Leise, J. Pruefer (THM, Germany), U. Zschieschang, H. Klauk (MPI-Stuttgart, Germany), G. Darbandy (THM, Germany), B. Iñíguez (URV, Spain), A. Kloes (THM, Germany)

10:50 Coffee Break**11:10 Special Session (Part 2): Compact Modeling of Heterogeneous Devices and System**

Chairman: Prof. Maria-Helena Fino

Comprehensive Design-oriented FDSOI EKV Model

H.-C. Han, A. D'Amico, C.ENZ (EPFL, Switzerland)

Advances in Qucs-S Schematic Capture for SPICE and Verilog-A Device Modelling and Circuit Simulation

M. Brinson (London Metropolitan Univ., UK), D. Tomaszewski (Inst. of Microelectronics and Photonics, Poland)

Multidomain Modeling for Reliability Evaluation of Devices and Microsystems Using Verilog-A

J.-B. Kammerer, M. Garci, F. Prégaldiny, L. Hébrard (ICube, France), A. Kaïd, F. Roqueta (STMicroelectronics, France)

14:00 Tourist Activities**19:00 Closing Ceremony**

Wrocław City Center Map



Q Hotel Plus Wrocław - The Conference Site
Zaołziarska 2



Wrocław Główny
Train Station



Dworzec Centralny
Coach Station

